

General Specifications

Power Requirement:	Three phase x 110 - 440v x 50 hertz – 1.1kw drive
Belt material:	Two ply, high grip, rough top finish
Effective width:	500mm & 600mm belt widths as standard with other widths available on request.
Surface speed:	25 metres/min. Variable speed drive available on request
Weight:	950kg
Chassis construction:	Heavy gauge fabricated hollow steel section
Castors:	150/200mm dia/swivel/braked (Optional)
Forward/reverse/stop:	Controls located on both ends of infeed boom
Capacity:	45 kgs per metre

Vega's Telescopic Boom Belt Conveyor is useful for loading & unloading operations from trucks and containers. It is versatile and can also be useful in places where there are space restrictions. The system was developed in-house, keeping in view the varied requirements of industries.

The special purpose telescopic conveyor can come in a number of stages as per the designed criteria. The multistage conveyor can not only be used in loading bays, shipping areas but also as a conveyor based on the requirement at the hour of operation. It is engineered for easy transfer of products to the required areas of operation quickly and smoothly.

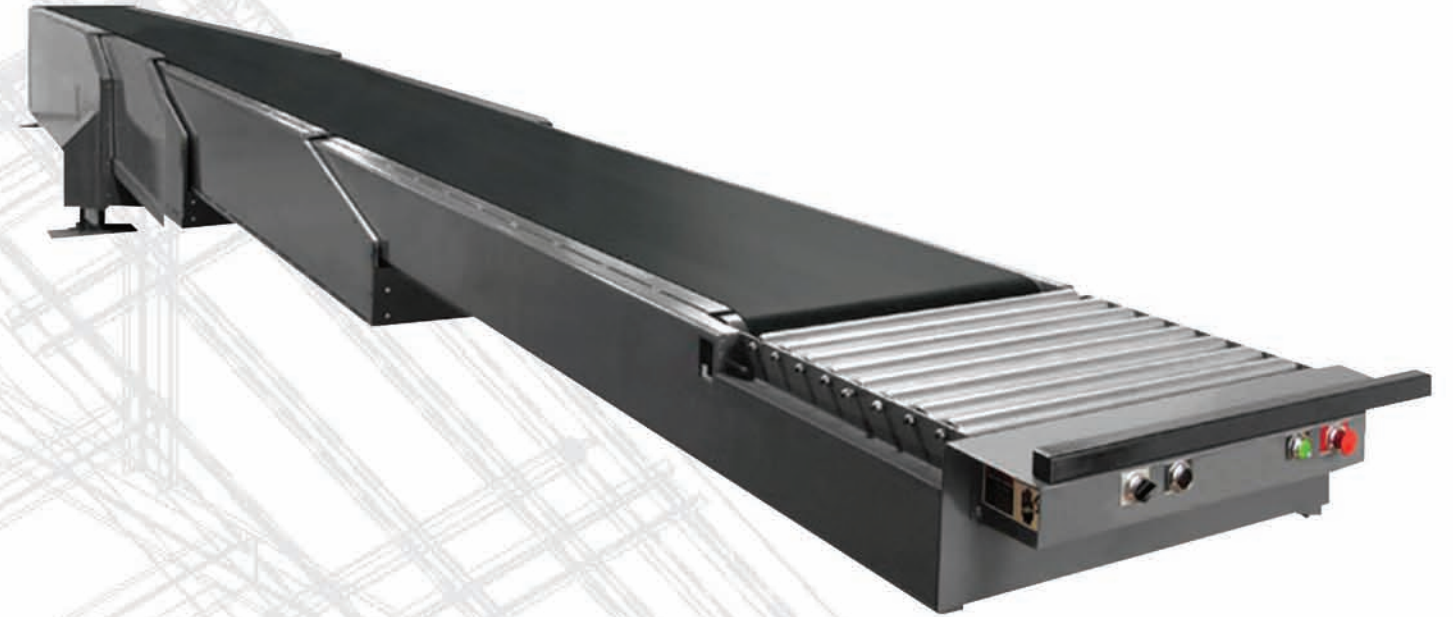
The number of stages of telescopic boom is decided by the desired expanded & the compressed length of the conveyor. It reaches to the end of the vehicle or another conveyor providing smooth uninterrupted flow from the beginning to the end of the conveyor.

The boom and the belt drive are controlled by simple push buttons and the boom can be extended or retracted to wherever the operator requires. The belt can run in either direction making it useful for loading & unloading operations. The system can be inclined to facilitate loading or unloading operations where ever there is no bay.

The standard belt widths of 500 mm & 600 mm can accommodate a variety of package sizes. Additional belt widths are custom built to suit specific requirements. Custom built belts take care of proper gripping of packages.

Vega

Building Systems That Build Companies



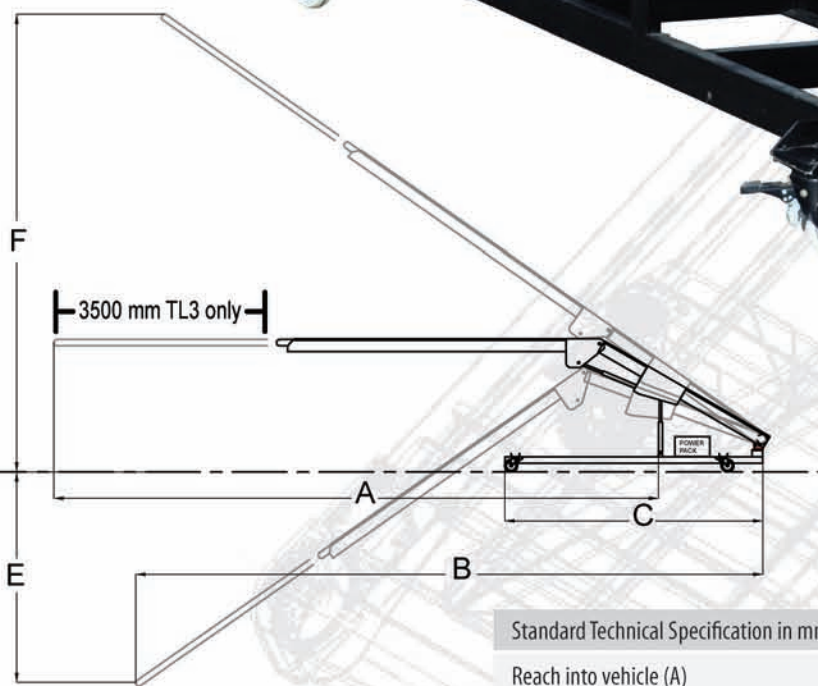
Vega
Conveyors & Automation Ltd.

Plot # 201/7, Phase – II, IDA, Cherlapally, Hyderabad – 500 051, INDIA
Phones: +91-40-2726 1123 /1124, 09393301123, 0939101124
Fax: +91-40-2726 1279
Mail: info@vegaindia.com, marketing@vegaindia.com
Web: www.vegaindia.com

Vega's Loader / Unloader / Telescopic conveyor is an efficient, fast and an economical solution for loading and unloading of packages into and from trucks / containers. Custom built systems ensure proper gripping of packages while loading or unloading them.

Truck & Container Loaders / Unloaders

Truck Loader/Unloader



Standard Technical Specification in mm*	TL1	TL2	TL3
Reach into vehicle (A)	2000	6000	9000
Total Length (B)	7000	8120	11120
Chassis Length (C)	3050	3350	4450
Loading Height (D)	600	600	600
Minimum Delivery Height			
Below Ground Level (E)	-----	1000	2500
Maximum Delivery Height (F)	1800	4000	6000
Swivel for Stacking	NO	YES	YES
Telescopic Extension	NO	NO	YES

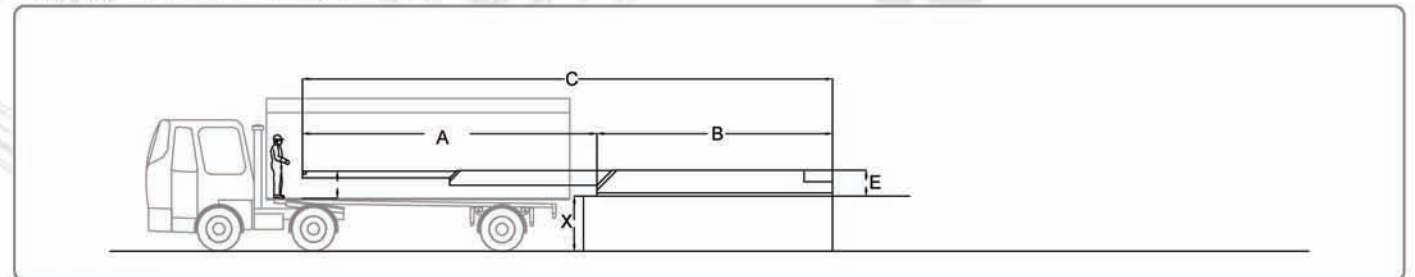
*Specifications are subject to change without notice.

Telescopic Conveyor

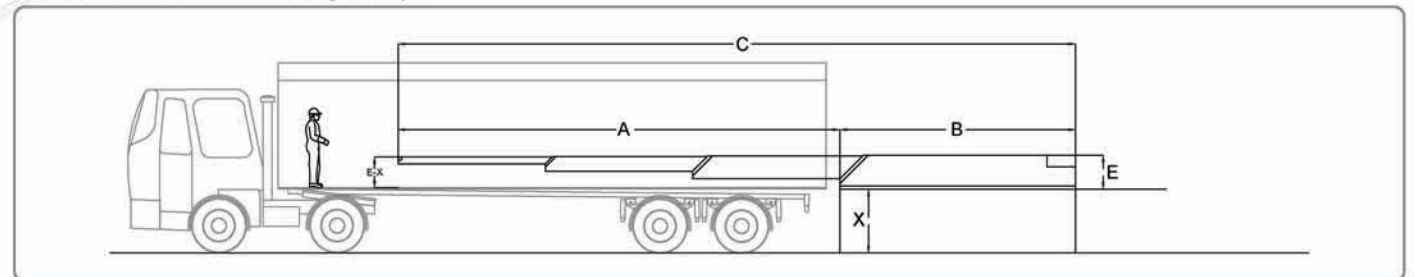
Standard Technical Specification in mm*	TC 1	TC 2	TC 3
Closed Length (B)	4000	5200	5200
Telescopic Action (A)	4000	6000	9000
Overall Length (C)	8000	11200	14200
Height (E)	575	575	750
Width Over Main Body	840	840	870
Width Over Drives	1115	1115	1140
No. of Telescopic Stages	2	2	3



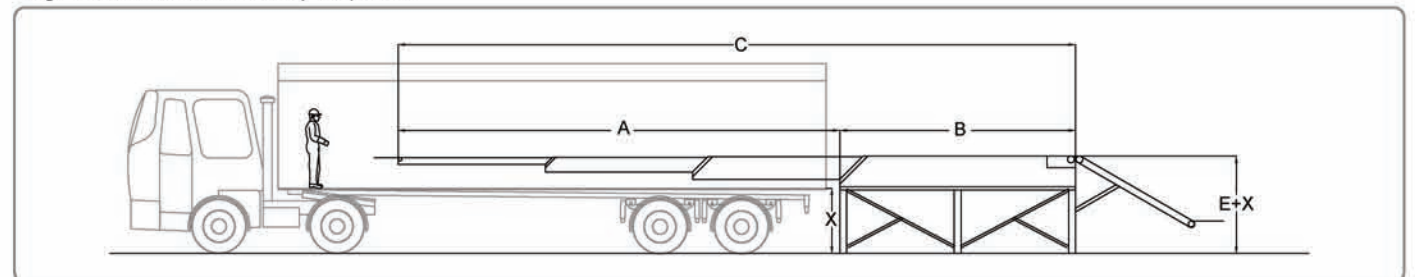
Standard Low Level Chassis Two Stage Conveyor



Standard Low Level Chassis Three Stage Conveyor



High Level Chassis with Tail Conveyor (Optional)



Options of fully mobile chassis and Traversing chassis are available on request.

*Specifications are subject to change without notice.